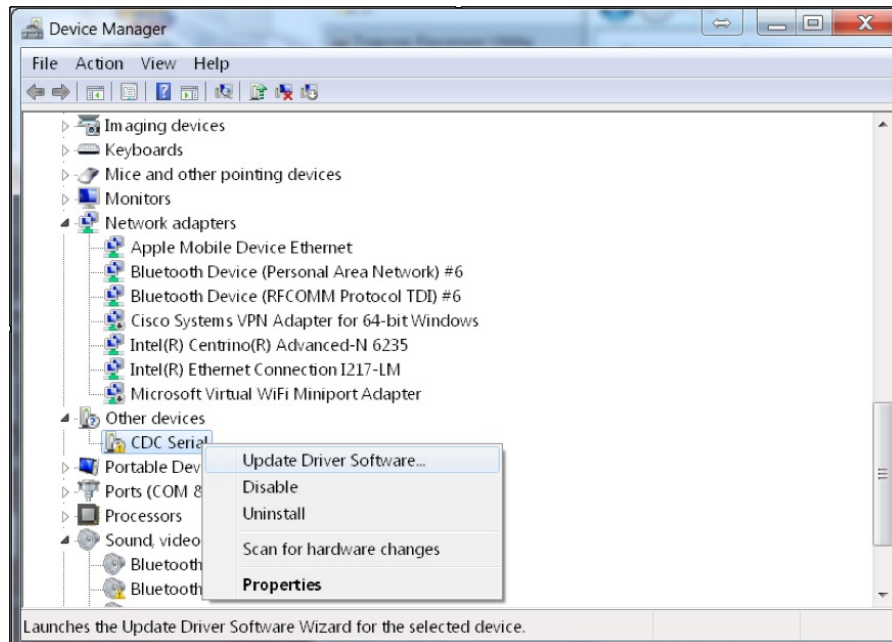


HiPer HR - Installing USB Drivers

- Connect HiPer HR to computer USB port using Topcon micro USB cable (P/N 1013602-01)
- Device should automatically be detected
- Access Control Panel (varies based on Windows version)
- Select Device Manager
- Under "Other Devices", select and right-click "CDC Serial" and choose "Update Driver Software"



- Browse to location of Topcon HiPer HR driver (*.cat)
- Click "Install"
- Once installation is complete, HiPer HR will display as "Gadget Serial" and a virtual COM port will be assigned

Latest Available Drivers:

Keywords

HiPer HR, HiPer HR USB

Relevant Products



Topcon HiPer HR